



INDUSTRIAL AVENUE SELF STORAGE  
8151 INDUSTRIAL AVENUE  
ROSEVILLE, CALIFORNIA 95678

EXTERIOR ELEVATIONS

COPYRIGHT © 2004. DRAWINGS, DESIGNS AND SPECIFICATIONS AS INSTRUMENTS OF SERVICE ARE THE PROPERTY OF GRAY ROBERTS ARCHITECT, INC. (GRA), AND MAY NOT BE REPRODUCED WITHOUT THE WRITTEN PERMISSION OF GRA.

REVISIONS

NO.	DATE	DESCRIPTION

DATE JUNE 3, 2019

SCALE AS NOTED

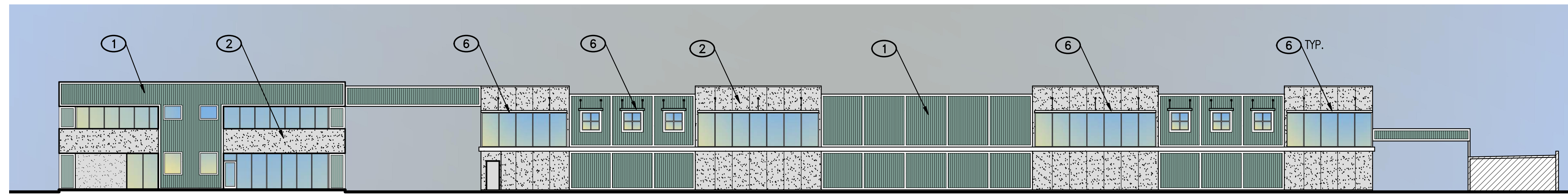
DRAWN BY

JOB NO. 18-18

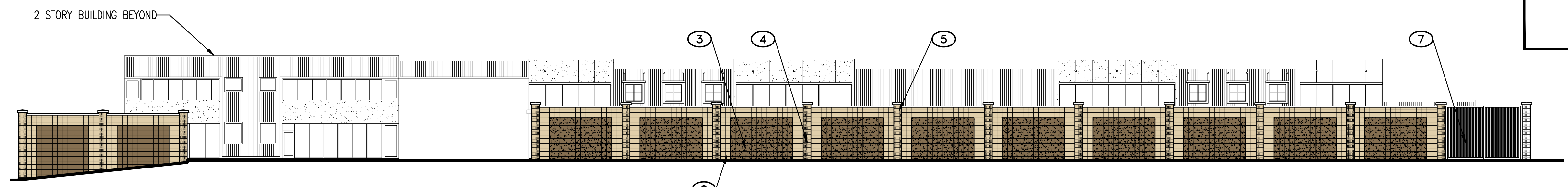
SHEET

A3.0

- KEY NOTES** #
1. PREFINISHED METAL SIDING
  2. EIFS (EXTERIOR INSULATION FINISH SYSTEM)
  3. SPLIT FACE CONCRETE MASONRY WALL UNITS
  4. SPLIT FACE CONCRETE MASONRY PILASTERS
  5. PRECAST CONCRETE CAP
  6. EYEBROW WINDOW SHADES WITH STEEL SUPPORTS
  7. WROUGHT IRON GATE
  8. SHOT-BLASTED CONCRETE MASONRY WALL UNITS



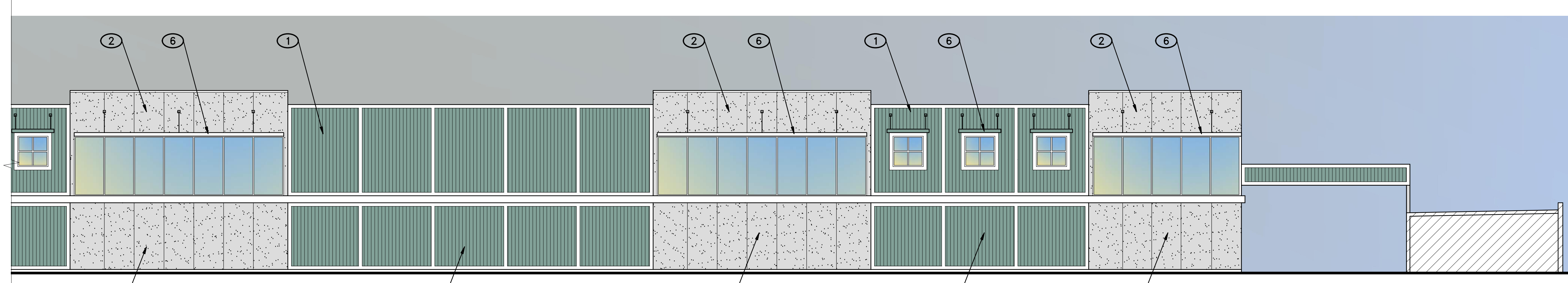
**OVERALL EAST ELEVATION  
MAIN TWO STORY BUILDING**  
1  
1/16"=1'-0"



**OVERALL EAST ELEVATION  
OUTSIDE WALL**  
2  
1/16"=1'-0"



**ENLARGED EAST ELEVATION  
MAIN TWO STORY BUILDING**  
3  
1/8"=1'-0"

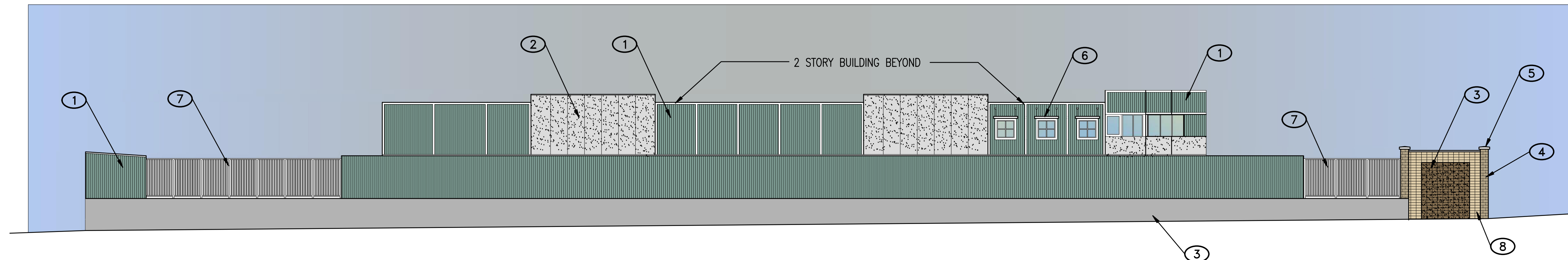


**ENLARGED EAST ELEVATION  
MAIN TWO STORY BUILDING**  
4  
1/8"=1'-0"

CITY OF ROSEVILLE APPROVAL

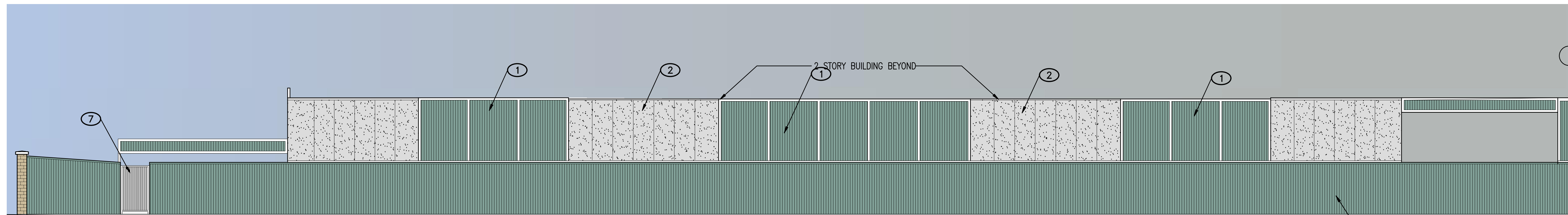


INDUSTRIAL AVENUE SELF STORAGE  
8151 INDUSTRIAL AVENUE  
ROSEVILLE, CALIFORNIA 95678



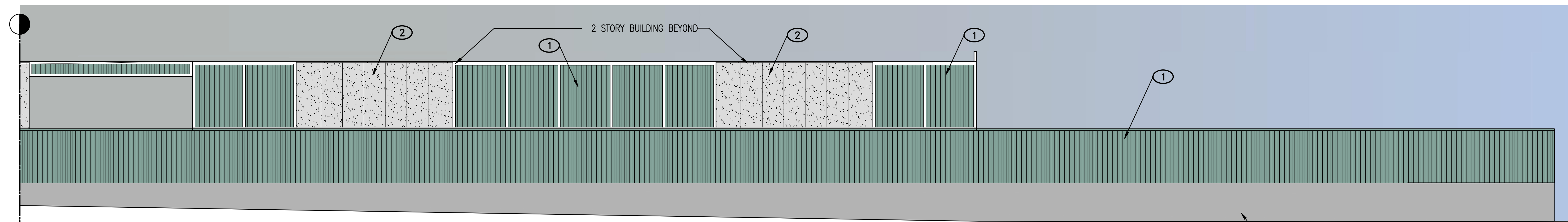
**1 SOUTH EXTERIOR ELEVATION**  
1/16" = 1'-0"

1/16" = 1'-0"  
0 4' 12' 24' 48'



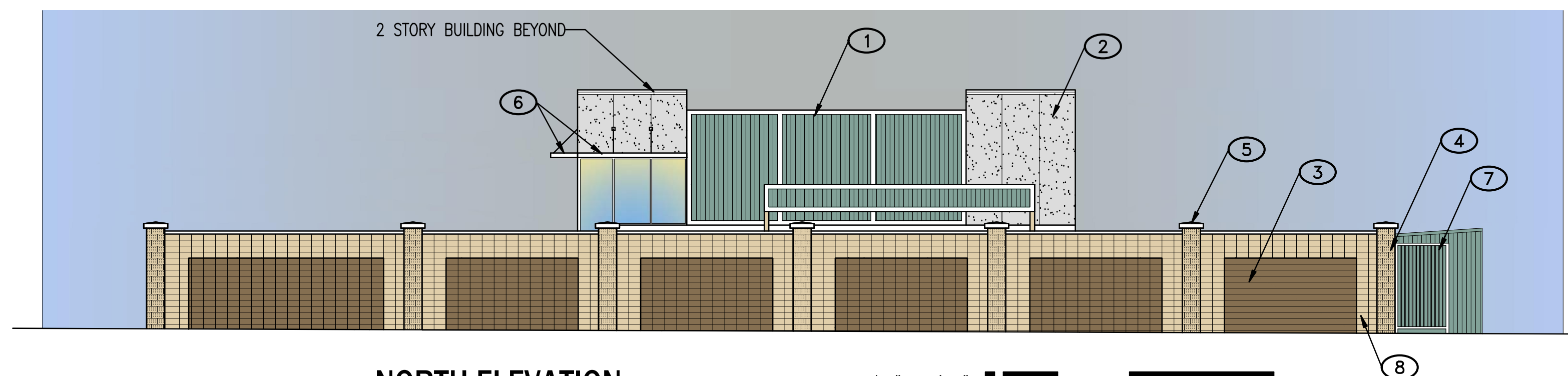
**2 PARTIAL WEST EXTERIOR ELEVATION**  
3/32" = 1'-0"

3/32" = 1'-0"  
0 2' 8' 16' 32'



**2.5 PARTIAL WEST EXTERIOR ELEVATION**  
3/32" = 1'-0"

3/32" = 1'-0"  
0 2' 8' 16' 32'



**4 NORTH ELEVATION**  
3/32" = 1'-0"

3/32" = 1'-0"  
0 2' 8' 16' 32'

**KEYNOTES #**

1. PREFINISHED METAL SIDING
2. EIFS (EXTERIOR INSULATION FINISH SYSTEM)
3. SPLIT FACE CONCRETE MASONRY WALL UNITS
4. SPLIT FACE CONCRETE MASONRY UNIT PILASTERS
5. PRECAST CONCRETE CAP
6. EYEBROW WINDOW SHADES WITH STEEL SUPPORTS
7. WROUGHT IRON FENCING
8. SHOT BLASTED CONCRETE MASONRY WALL UNITS

**EXTERIOR ELEVATIONS**

COPYRIGHT © 2019. DRAWINGS, DESIGNS AND SPECIFICATIONS AS INSTRUMENTS OF SERVICE ARE THE PROPERTY OF GRAY ROBERTS ARCHITECT, INC. (GRA), AND MAY NOT BE REPRODUCED WITHOUT THE WRITTEN PERMISSION OF GRA.

**REVISIONS**

NO.	DATE	DESCRIPTION

DATE JUNE 3, 2019

SCALE AS NOTED

DRAWN BY

JOB NO. 18-18

SHEET

